



MOTORSPORT SOUTH AFRICA

Association incorporated under section 21
Reg. No. 1995/05605/08

VAT Reg. No. 45 7015 1219

First Floor, 9 (formerly 108) Monza Close, Kyalami Park, Midrand. P.O. Box 11499 Vorna Valley, 1686, South Africa
Telephone: 0861 MSA MSA (0861 672 672) Fax: 0866 123 456 Website: www.motorsport.co.za. E-mail: adrian@motorsportsa.co.za

MSA SPORTS CAR CIRCULAR 1/2010

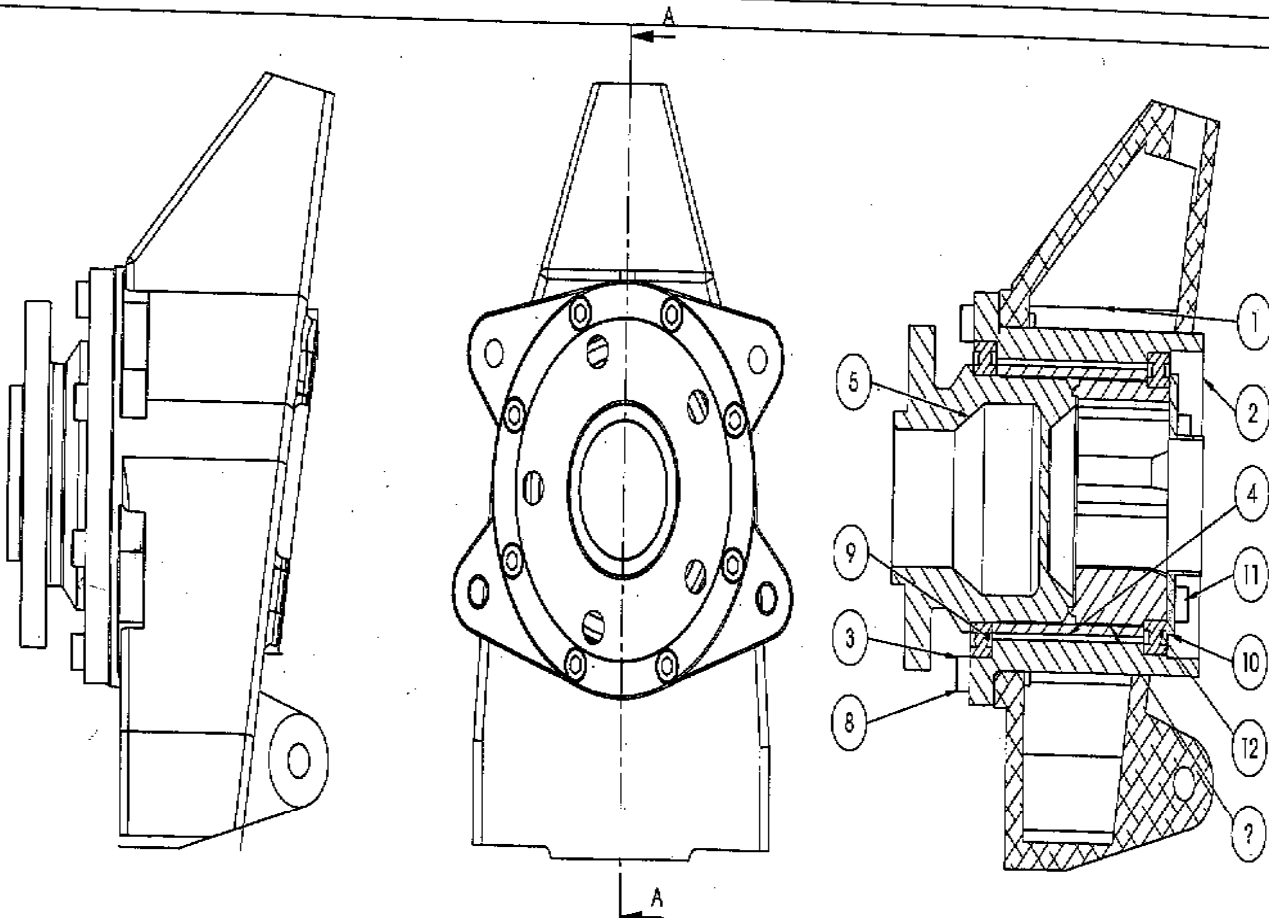
156869/144

In terms of Article 1 of the 2010 *Shelby Can-Am Regulations and Specifications*, the SCRA has approved a new tripoidal outer CV joint for use in Shelby Can- Am race cars. These CV joints may be utilised from the first event of 2010 but will become **compulsory** from the 4th event on the 2010 calendar.

The upright may be modified as per the drawing overleaf in order to accommodate the CV joint.

ADRIAN SCHOLTZ
MANAGER – SPORTING SERVICES

19th February 2010



ITEM NO.	PART NUMBER	A-A DESCRIPTION	Default/ QTY.
2	DD 724 Shelby Hub Bearing Carrier	UPRIGHT (FREE ISSUE)	1
3	DIN 912 M8 x 35 — 35N	Hexagon socket head cap screw DIN 912 - M8 x 35	8
4	Spacer		1
5	Wheel Hub		1
6	Tripodal		1
7	CVBoot		1
9	SKF - 61818 - 34,SI,NC,34_68		1
10	Hub Retainer		1
12	SKF - 61817 - 34,SI,NC,34_68		1

The copyright in this drawing is the exclusive property of the Drafter and shall be treated as strictly confidential. This drawing or its copy shall not be copied, shown, loaned or handed to any third party without the prior written consent. This drawing shall not be used for any purpose other than the execution of orders of the Drafter. posted by Drafter, and unless otherwise agreed must be returned.

REV.	DATE	SCALE	NTS	DESCRIPTION
				Hub assembly
				REV. CO FILE NAME FATech Data/DD 724 Shelby Hub 1
				REFERENCE DRAWINGS Weight: Material: DRAWN PP CHECKED
				Sheet 8 DATE 2009/07/03 DATE



P.O. BOX 16, Maroldsburg 1700 TELEPHONE: (012) 764-2226 TELEFAX: 08801 764-2226